

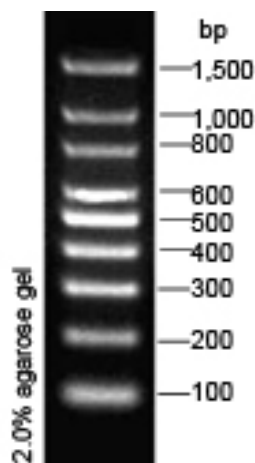
# 100bp DNA Marker

**Product:** 100bp DNA Ladder, ready to use

**Cat No:** SG0520

**Package:** 100 applications

**Price:** EUR30.00



2.0% Agarose, 5ul/lane

6cm length gel, 1xTBE, 15V/cm

## **Description:**

Plasmid DNA was completely digested with appropriate restriction endonucleotides, ethanol precipitated and dissolved in storage buffer.

The DNA marker contains the following fragments: 100, 200, 300, 400, 500, 600, 800, 1000, 1500bp.

## **Quantity per Package:**

100 applications.

## **Suggest Loading Amount:**

5ul/lane.

## **Storage & Loading Buffer:**

Add: Floor 2, Building A, 328#, Wuhe Road, Minhang District, Shanghai, 201109, China

Tel: +86-21-54460832

Fax: +86-21-54460831

Web: [www.synthesigene.com](http://www.synthesigene.com)

E-mail: [master@shinegene.org.cn](mailto:master@shinegene.org.cn)

---

10mM Tris-HCl (pH7.6), 10mM EDTA, 0.01% xylene cyanol FF, 0.01% Bromophenol Blue, 15% glycerol.

**Storage:**

4°C

**Note:**

If the width of Agarose gel lane is more than 6mm, please load more ladder DNA onto the gel.

Do not heat before use.

Suggest gel concentration: 1.0-2.0%.



**Shanghai ShineGene Molecular Bio-tech Co.,Ltd.**

Add: Floor 2, Building A, 328#, Wuhe Road, Shanghai 201109,

Tel: +86-21-54460832

Fax: +86-21-54460831

E-mail: shinegene@vip.163.com

Website: [www.synthesisgene.com](http://www.synthesisgene.com)